



eldec Mini-MIND
Compact Induction Heating System

eldec

Glowing Innovations.



eldec Mini-MIND Flexible Integrated System

The eldec Mini-MIND is the compact, "smaller sibling" of our full-featured MIND hardening machine series. A complete, integrated system for your induction hardening application or

any other induction heat treating of small parts. The energy source with active coolant and quench system (if needed) is integrated into the machine base.

The Mini-MIND can be transported "as is," featuring the smallest foot print of any complete system up to 30 kW, medium or high frequency (MF or HF).

One of many possibilities:
Z-axis slide unit with 250 mm stroke and coaxial output transformer, inductor coil and quench head in "lower" position.*

Light curtain

Part-holding device designed for connecting rods of small motors to be loaded and unloaded manually.*

Work area cover removed for illustration purposes.



Highly flexible in work area utilization.

Stainless steel basin.

Energy source, coolant system, quench system and controls all integrated into the machine base. Power: MF or HF up to 30 kW.

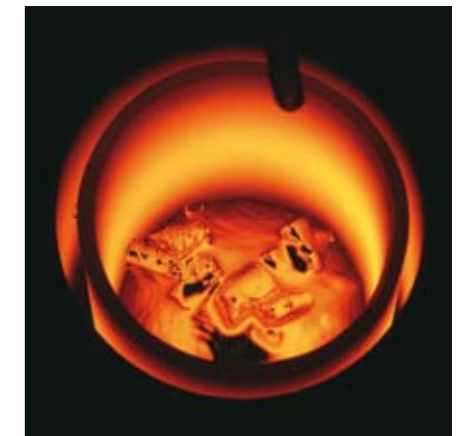
Floor space (L x W): 1500 x 750 mm (60" x 30").

* Technical changes possible; configuration modules shown for example only.



The spacious working area allows for different modules and work holding devices to be freely positioned.

This creates flexibility for different parts and applications. Effective for low, medium and high volume production for hardening, tempering, brazing, fitting or melting in the smallest possible space.



Operating and programming through a touch screen panel.



All-in-one and easily accessible: energy source, coolant system, quench system and electrical controls.



eldec Schwenk Induction GmbH
 Otto-Hahn-Straße 14
 72280 Dornstetten
 Germany
 Phone +49 - 74 43 - 96 49 - 0
 info@eldec.de

www.eldec.de



eldec Induction U.S.A. Inc.
 3355 Bald Mountain Road, Unit 30
 Auburn Hills, MI 48326
 USA
 Phone +1 - 248 - 364 - 47 50
 info@eldec-usa.com

www.eldec-usa.com



**eldec Schwenk Induction GmbH
 Xiamen Representative Office**
 5F-E, Rihua Building
 No.8 Xinfeng 2nd Road
 Torch Hi-Tech Industrial
 Development Zone
 Xiamen, China
 Post Code: 361009
 Phone +86 - 592 - 5 28 70 12
 info@eldec-china.com

www.eldec-china.com

eldec Sales- and Servicepartners

eldec c/o EMAG UK Ltd.
 Elwyn York
 Chestnut House
 Kingswood Business Park
 Holyhead Road
 Albrighton
 Wolverhampton
 WV7 3AU
 United Kingdom
 Phone +44 - 19 02 - 37 60 90
 eyork@emaguk.co.uk

ERALL
Jerzy Tomczak
 ul. Hoza 43/49 lok. 40
 00-681 Warschau
 Polen
 Phone +48 - 22 - 3 92 73 22
 j.tomczak@erall.pl

Maquinaria ALSI
 Victor Mejía
 Ixtapaluca, 40
 Cumbria
 Cuautitlán Izcalli
 México
 Zip Code: 54740
 Phone +55 - 85 34 - 93 85
 and +55 - 85 34 - 55 22 29
 1399vmejia-alsi@hotmail.com

Shinsei Shoji Co.,Ltd.
 Koji Sagayama
 1-1-3, Iwamoto-Cho
 Chiyoda-Ku, Tokyo
 101-0032, Japan
 Phone +81 - 3 - 38 66 - 48 81
 k.sagayama@shinsei-shoji.co.jp

Sameee Corporation Ltd.
 David Kim
 401, Jungwoo Town#2
 Shingil-Dong
 Ansan, Kyunggi-Do
 Korea
 Phone +82 - 31 - 492 1691
 dykim3e@hanmail.net